



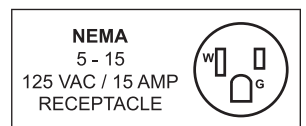
**Heated Patio Table**  
**Model PH-CN-1100-T**  
**Item 43123**  
**Instruction Manual**



*Revised - 02/15/2022*



Toll Free: 1-800-465-0234  
Fax: 905-607-0234  
Email: [service@omcan.com](mailto:service@omcan.com)  
[www.omcan.com](http://www.omcan.com)



# ***Table of Contents***

Model PH-CN-1100-T

---

<b>Section</b>	<b>Page</b>
General Information -----	3 - 4
Safety and Warranty -----	4 - 6
Technical Specifications -----	6
Installation -----	7
Maintenance -----	7
Parts Breakdown -----	8 - 9
Electrical Schematics -----	10
Warranty Registration -----	11



# General Information

---

Omcan Manufacturing and Distributing Company Inc., Food Machinery of America, Inc. dba Omcan and Omcan Inc. are not responsible for any harm or injury caused due to any person's improper or negligent use of this equipment. The product shall only be operated by someone over the age of 18, of sound mind, and not under the influence of any drugs or alcohol, who has been trained in the correct operation of this machine, and is wearing authorized, proper safety clothing. Any modification to the machine voids any warranty, and may cause harm to individuals using the machine or in the vicinity of the machine while in operation.

## CHECK PACKAGE UPON ARRIVAL

Upon receipt of an Omcan shipment please inspect for external damage. If no damage is evident on the external packaging, open carton to ensure all ordered items are within the box, and there is no concealed damage to the machine. If the package has suffered rough handling, bumps or damage (visible or concealed), please note it on the bill of lading before accepting the delivery and contact Omcan within 24 hours, so we may initiate a claim with the carrier. A detailed report on the extent of the damage caused to the machine must be filled out within three days, from the delivery date shown in the shipping documents. Omcan has no recourse for damaged products that were shipped collect or third party.

**Before operating any equipment, always read and familiarize yourself with all operation and safety instructions.**

Omcan would like to thank you for purchasing this machine. It's of the utmost importance to save these instructions for future reference. Also save the original box and packaging for shipping the equipment if servicing or returning of the machine is required.

---

Omcan Fabrication et distribution Compañie Limité et Food Machinery d'Amérique, dba Omcan et Omcan Inc. ne sont pas responsables de tout dommage ou blessure causé du fait que toute personne ait utilisé cet équipement de façon irrégulière. Le produit ne doit être exploité que par quelqu'un de plus de 18 ans, saine d'esprit, et pas sous l'influence d'une drogue ou d'alcool, qui a été formé pour utiliser cette machine correctement, et est vêtu de vêtements de sécurité approprié. Toute modification de la machine annule toute garantie, et peut causer un préjudice à des personnes utilisant la machine ou des personnes à proximité de la machine pendant son fonctionnement.

## VÉRIFIEZ LE COLIS DÈS RÉCEPTION

Dès réception d'une expédition d'Omcan veuillez inspecter pour dommages externes. Si aucun dommage n'est visible sur l'emballage externe, ouvrez le carton afin de s'assurer que tous les éléments commandés sont dans la boîte, et il n'y a aucun dommage dissimulé à la machine. Si le colis n'a subi aucune mauvaises manipulations, de bosses ou de dommages (visible ou cachée), notez-le sur le bond de livraison avant d'accepter la livraison et contactez Omcan dans les 24 heures qui suivent, pour que nous puissions engager une réclamation auprès du transporteur. Un rapport détaillé sur l'étendue des dommages causés à la machine doit être rempli dans un délai de trois jours, à compter de la date de livraison indiquée dans les documents d'expédition. Omcan n'a aucun droit de recours pour les produits endommagés qui ont été expédiés ou cueilli par un tiers transporteur.

# General Information

---

Avant d'utiliser n'importe quel équipement, toujours lire et vous familiariser avec toutes les opérations et les consignes de sécurité.

Omcan voudrais vous remercier d'avoir choisi cette machine. Il est primordial de conserver ces instructions pour une référence ultérieure. Également conservez la boîte originale et l'emballage pour l'expédition de l'équipement si l'entretien ou le retour de la machine est nécessaire.

Omcan Empresa De Fabricacion Y Distribucion Inc. Y Maquinaria De Alimentos De America, Inc. dba Omcan y Omcan Inc. no son responsables de ningun daño o perjuicio causado por cualquier persona inadecuada o el uso descuidado de este equipo. El producto solo podra ser operado por una persona mayor de 18 años, en su sano juicio y no bajo alguna influencia de droga o alcohol, y que este ha sido entrenado en el correcto funcionamiento de esta máquina, y ésta usando ropa apropiada y autorizada. Cualquier modificación a la máquina anula la garantía y puede causar daños a las personas usando la máquina mientras esta en el funcionamiento.

## REVISE EL PAQUETE A SU LLEGADA

Tras la recepcion de un envio Omcan favor inspeccionar daños externos. Si no hay daños evidentes en el empaque exterior, Habra el carton para asegurarse que todos los articulos solicitados estén dentro de la caja y no encuentre daños ocultos en la máquina. Si el paquete ha sufrido un manejo de poco cuidado, golpes o daños (visible o oculto) por favor anote en la factura antes de aceptar la entrega y contacte Omcan dentro de las 24 horas, de modo que podamos iniciar una reclamación con la compañía. Un informe detallado sobre los daños causados a la máquina debe ser llenado en el plazo de tres días, desde la fecha de entrega que se muestra en los documentos de envío. Omcan no tiene ningun recurso por productos dañados que se enviaron a recoger por terceros.

Antes de utilizar cualquier equipo, siempre lea y familiarizarse con todas las instrucciones de funcionamiento y seguridad.

Omcan le gustaría darle las gracias por la compra de esta máquina. Es de la mayor importancia para salvar estas instrucciones para futuras consultas. Además, guarda la caja original y el embalaje para el envío del equipo si servicio técnico o devolución de la máquina que se requiere.

# Safety and Warranty

---

## Cautions:

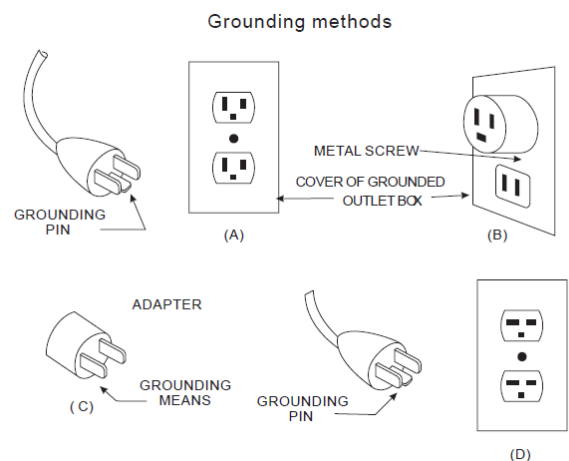
1. The unit must be placed with the clearance of 100cm to the wall and 30cm to the ceiling.
2. High temperature, keep combustible material such as furniture, papers, clothes and curtains at least 3 feet (0.9m) from the front of the heater and away from the side and the rear.
3. The unit must be securely placed on a horizontal and flat surface.
4. The unit is at a high temperature during operation. It keeps hot for a period after shutdown. Potential danger would occur when touching it during this period.

# Safety and Warranty

5. Don't cover the unit with anything during operation or shortly after shut down.
6. Don't wrap the power cord around the unit.
7. The unit must be handled with care, avoid vibration or hitting.
8. The unit must be securely grounded during operation.
9. When the unit or power cord is damaged, the unit must be repaired by Omcan or an Omcan approved service technician.
10. The heater must not be located immediately below a socket or outlet.
11. Do not use this heater with a programmer, timer or any other device that switches the heater on automatically, fire may be resulted.
12. The appliance is not intended for use by persons (including children) with reduced physical, sensory, mental capabilities or those who lack experience and knowledge unless otherwise trained.
13. Children should be supervised to ensure that they do not play with the appliance.
14. This unit is for household use only, it must not be used in a location with lots of surrounding flammables.
15. Don't use this unit in close proximity to water, dust, gas, ect.
16. Do not use this unit to dry clothes or towels.
17. Do not use this unit as a sauna heater.
18. Do not use this unit as a room heater.
19. Do not use this unit in a place of animal propagation and raising.
20. Do not immerse this unit into water for cleaning.
21. The socket that this unit is plugged into must be easily accessible.
22. Two dark points may appear on the surface of the heating elements, or the surface of the heating elements may turn white during the first few minutes of operation. This is normal and may not affect the performance of the unit.
23. A warning beeper will go off in case the heater is covered by something and the heater will switch off.
24. If the alarm goes off (the light flashes) immediately turn off the unit and inspect around the unit to determine the cause. **DO NOT OPERATE THE HEATER WHEN THE ALARM GOES OFF.**
25. Never run the electrical cable along the floor, that may cause a trip hazard.
26. Always turn the controls to OFF before unplugging the unit.
27. Only use this heat as described in this manual.
28. Do not use an extension cord.
29. **SAVE THESE INSTRUCTIONS.**

## GROUNDING INSTRUCTIONS

This heater is to be used on a 120V socket. The cord has a plug as shown below. An adapter as shown at C is available for connecting three-blade grounding-type plugs to two-slot receptacles. The green grounding lug extending from the adapter must be connected to a permanent ground such as a properly grounded outlet box. The adapter should not be used if a three-slot grounded receptacle is available.



A4210

# Safety and Warranty

---

**RESIDENTIAL USERS:** Vendor assumes no liability for parts or labor coverage for component failure or other damages resulting from installation in non-commercial or residential applications. The right is reserved to deny shipment for residential usage; if this occurs, you will be notified as soon as possible.

## 1 YEAR PARTS AND LABOUR BENCH WARRANTY

Within the warranty period, contact Omcan Inc. at 1-800-465-0234 to schedule a drop off to either an Omcan authorized service depot in the area, or to an Omcan Service warehouse to repair the equipment.

Unauthorized maintenance will void the warranty. Warranty covers electrical and part failures, not improper use.

Please see <https://omcan.com/disclaimer> for complete info.

### WARNING:

The packaging components (cardboard, polyethylene, and others) are classified as normal solid urban waste and can therefore be disposed of without difficulty.

In any case, for suitable recycling, we suggest disposing of the products separately (differentiated waste) according to the current norms.

**DO NOT DISCARD ANY PACKAGING MATERIALS IN THE ENVIRONMENT!**

# Technical Specifications

---

<b>Model</b>	<b>PH-CN-1100-T</b>
<b>Table Size (Diameter)</b>	23.5" / 597mm
<b>Power</b>	1.5 kW
<b>Electrical</b>	120V / 60Hz / 1
<b>Dimensions</b>	23.5" x 23.5" x 43.4" / 597 x 597 x 1102mm
<b>Weight</b>	17.4 lbs. / 7.9 kgs.
<b>Packaging Dimensions</b>	5" x 27" x 26" / 127 x 686 x 660mm
<b>Packaging Weight</b>	20.5 lbs. / 9.3 kgs.
<b>Item Number</b>	43123

# *Installation*

---

1. Remove all of the components from the carton.
2. Turn over the base and base cover, affix the wheels through the small holes on the base.
3. Fix the screw feet onto the screw board, and adjust them to be leveled with the wheels.
4. Screw M8x120 through the base, base cover, stainless steel tube. Use an M8 Allen Key to fasten the screw with the foot bracket.
5. Turn over the heater body. Put the base on it. Pull the power cord through the base cover and base.
6. Match the base bracket with the holes on the base cover and base, then fix the base bracket with a set of washers and screws with the M6 Allen Key.

# *Maintenance*

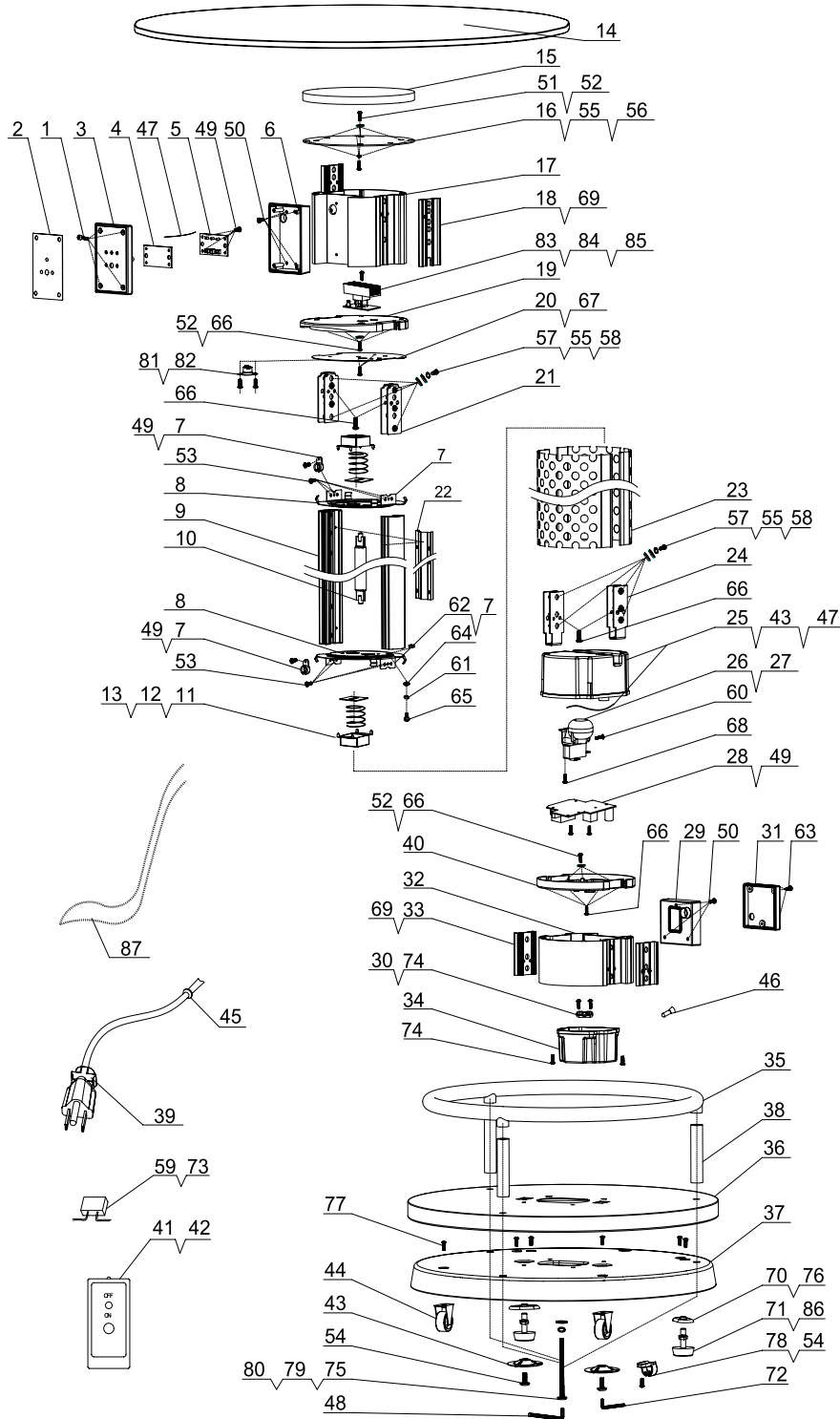
---

## **CLEANING**

Unplug the unit before cleaning. It should be wiped with a damp cloth. Do not use a water jet or submerge the unit in water.

# Parts Breakdown

Model PH-CN-1100-T 43123





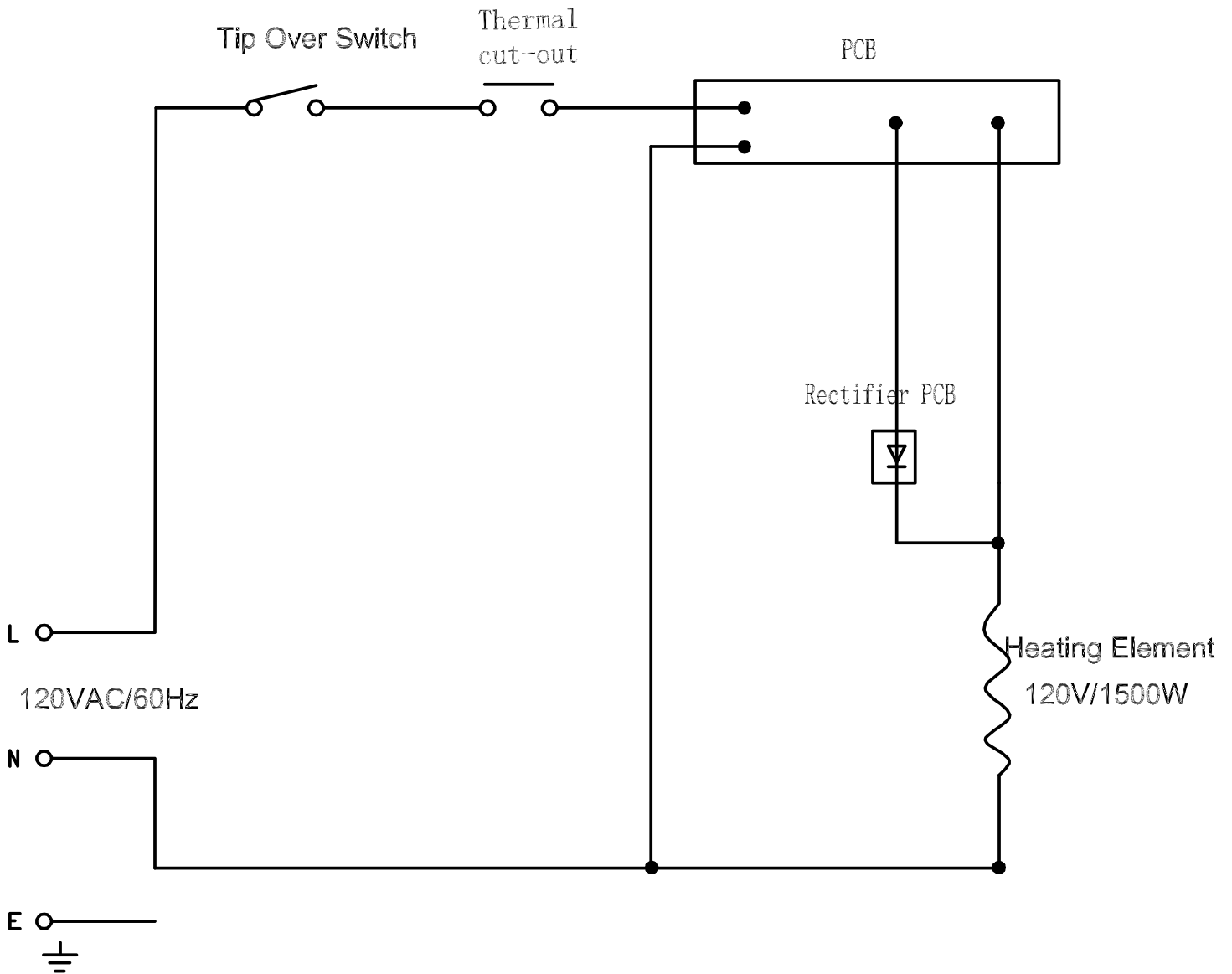
# Parts Breakdown

## Model PH-CN-1100-T 43123

Item No.	Description	Position	Item No.	Description	Position	Item No.	Description	Position
AD741	Tapping Screw 4x15 for 43123	1	60413	Cord Clip for 43123	30	AD786	Filter for 43123	59
AD742	PC Sticker for 43123	2	AD766	Wiring Box Cover for 43123	31	AD787	Screw M4x25 for 43123	60
60420	Control Panel for 43123	3	AD767	Lower Housing for 43123	32	AD788	Spring Washer 4.2x1 for 43123	61
AD743	Mica Board for 43123	4	AD768	Lower Plastic Board for 43123	33	AD789	Nut M4 for 43123	62
AD744	Operation PCB for 43123	5	AD769	Connection Cover for 43123	34	AD790	Tapping Screw 3x12 for 43123	63
AD745	Control Panel Base for 43123	6	60410	Foot Bracket for 43123	35	AD791	Star Washer for 43123	64
AD746	Internal Wire Washer for 43123	7	60407	Base Cover for 43123	36	AD792	Screw M4x10 for 43123	65
AD747	Frame Bracket for 43123	8	60404	Base for 43123	37	AD793	Tapping Screw 4x12 for 43123	66
AD748	Frame Bar for 43123	9	60408	Stainless Steel Tube for 43123	38	AD794	Tapping Screw 3x6 for 43123	67
AD749	Heating Element for 43123	10	60412	Power Cord for 43123	39	AD795	Tapping Screw 3.5x10 for 43123	68
AD750	Heating Element Clamp for 43123	11	AD770	Guard Lower Cover for 43123	40	AD796	Tapping Screw 3x6 for 43123	69
AD751	Spring 30xL40 for 43123	12	AD771	Remote Control for 43123	41	AD797	Nut Plate for 43123	70
AD752	Heating Element Bracket for 43123	13	AD772	RC PVC Sticker for 43123	42	60399	Screw Foot M6x30 for 43123	71
60415	Table Top for 43123	14	60401	Washer for 43123	43	AD798	Allen Key for 43123	72
60416	Table Fixture for 43123	15	60403	Wheel for 43123	44	AD799	Resistor for 43123	73
60417	Top Steel Board for 43123	16	AD773	Cord Bush for 43123	45	AD800	Tapping Screw 4x14 for 43123	74
AD753	Upper Housing for 43123	17	AD774	Connector Cap for 43123	46	60402	Screw M8x120 for 43123	75
AD754	Upper Plastic Board for 43123	18	AD775	Seal for 43123	47	AD801	Screw M4x20 for 43123	76
AD755	Mesh Guard Upper Cover for 43123	19	AD776	Allen Key for 43123	48	60405	Screw M6x10 for 43123	77
AD756	Mica Board for 43123	20	AD777	Tapping Screw 3x8 for 43123	49	AD802	Cord Clip for 43123	78
AD757	Frame Bar Joint Bracket for 43123	21	AD778	Tapping Screw 4x8 for 43123	50	AD803	Spring Washer 8.5x1.5 for 43123	79
AD758	Reflector for 43123	22	AD779	Tapping Screw 4x18 for 43123	51	AD804	Washer for 43123	80
AD759	Mesh Guard for 43123	23	AD780	Washer for 43123	52	AD805	Thermostat for 43123	81
AD760	Base Bracket for 43123	24	AD781	Tapping Screw 4x16 for 43123	53	AD806	Rivet for 43123	82
AD761	Control Box for 43123	25	60400	Screw M6x20 for 43123	54	AD807	Rectifier for 43123	83
AD762	Tip Switch for 43123	26	AD782	Spring Washer 6.2x1 for 43123	55	AD808	Cooling Aluminum for 43123	84
AD763	Tip Switch Bracket for 43123	27	AD783	Screw M6x8 for 43123	56	AD809	Tapping Screw 3.5x30 for 43123	85
AD764	Main PCB for 43123	28	AD784	Screw M6x30 for 43123	57	AD810	Nut M6 for 43123	86
AD765	Wiring Box for 43123	29	AD785	Washer for 43123	58	AD811	Internal Wire Assembly for 43123	87

# Electrical Schematics

Model PH-CN-1100-T 43123





# Warranty Registration

Thank you for purchasing an Omcan product. To register your warranty for this product, complete the information below, tear off the card at the perforation and then send to the address specified below. You can also register online by visiting:

Merci d'avoir acheté un produit Omcan. Pour enregistrer votre garantie pour ce produit, complétez les informations ci-dessous, détachez la carte au niveau de la perforation, puis l'envoyer à l'adresse spécifiée ci-dessous. Vous pouvez également vous inscrire en ligne en visitant:

Gracias por comprar un producto Omcan usted. Para registrar su garantía para este producto, complete la información a continuación, cortar la tarjeta en la perforación y luego enviarlo a la dirección indicada a continuación. También puede registrarse en línea en:

<https://omcan.com/warranty-registration/>

For mailing in Canada

Pour postale au Canada

Por correo en Canadá

**OMCAN**

PRODUCT WARRANTY REGISTRATION

3115 Pepper Mill Court,

Mississauga, Ontario

Canada, L5L 4X5

For mailing in the US

Pour diffusion aux États-Unis

Por correo en los EE.UU.

**OMCAN**

PRODUCT WARRANTY REGISTRATION

4450 Witmer Industrial Estates, Unit 4,

Niagara Falls, New York

USA, 14305

*or email to: [service@omcan.com](mailto:service@omcan.com)*



Purchaser's Information

Name: \_\_\_\_\_

Address: \_\_\_\_\_

City: \_\_\_\_\_ Province or State: \_\_\_\_\_ Postal or Zip: \_\_\_\_\_

Country: \_\_\_\_\_

Dealer from which Purchased: \_\_\_\_\_

Dealer City: \_\_\_\_\_ Dealer Province or State: \_\_\_\_\_

Invoice: \_\_\_\_\_

Model Name: \_\_\_\_\_ Model Number: \_\_\_\_\_

Machine Description: \_\_\_\_\_

Date of Purchase (MM/DD/YYYY): \_\_\_\_\_

Would you like to extend the warranty?  Yes  No

Company Name: \_\_\_\_\_

Telephone: \_\_\_\_\_

Email Address: \_\_\_\_\_

Type of Company:

Restaurant  Bakery  Deli

Butcher  Supermarket  Caterer

Institution (specify): \_\_\_\_\_

Other (specify): \_\_\_\_\_

Serial Number: \_\_\_\_\_

Date of Installation (MM/DD/YYYY): \_\_\_\_\_

**Thank you for choosing Omcan | Merci d'avoir choisi Omcan | Gracias por elegir Omcan**



Since 1951 Omcan has grown to become a leading distributor of equipment and supplies to the North American food service industry. Our success over these many years can be attributed to our commitment to strengthen and develop new and existing relationships with our valued customers and manufacturers. Today with partners in North America, Europe, Asia and South America, we continually work to improve and grow the company. We strive to offer customers exceptional value through our qualified local sales and service representatives who provide convenient access to over 6,500 globally sourced products.

---

Depuis 1951 Omcan a grandi pour devenir un des “leaders” de la distribution des équipements et matériel pour l’industrie des services alimentaires en Amérique du Nord. Notre succès au cours de ces nombreuses années peut être attribué à notre engagement à renforcer et à développer de nouvelles et existantes relations avec nos clients et les fabricants de valeur. Aujourd’hui avec des partenaires en Amérique du Nord, Europe, Asie et Amérique du Sud, nous travaillons continuellement à améliorer et développer l’entreprise. Nous nous efforçons d’offrir à nos clients une valeur exceptionnelle grâce à nos ventes locales qualifiées et des représentants de service qui offrent un accès facile à plus de 6500 produits provenant du monde entier.

---

Desde 1951 Omcan ha crecido hasta convertirse en un líder en la distribución de equipos y suministros de alimentos en América del Norte industria de servicios. Nuestro éxito en estos años se puede atribuir a nuestro compromiso de fortalecer y desarrollar nuevas relaciones existentes con nuestros valiosos clientes y fabricantes. Hoy con socios de América del Norte, Europa, Asia y América del Sur, que trabajan continuamente para mejorar y crecer la empresa. Nos esforzamos por ofrecer a nuestros clientes valor excepcional a través de nuestro local de ventas y representantes de los servicios que proporcionan un fácil acceso a más de 6,500 productos con origen a nivel mundial.

